



PROJECT MANAGEMENT CENTER FOR EXCELLENCE

A.J. CLARK SCHOOL OF ENGINEERING
Civil & Environmental Engineering Department



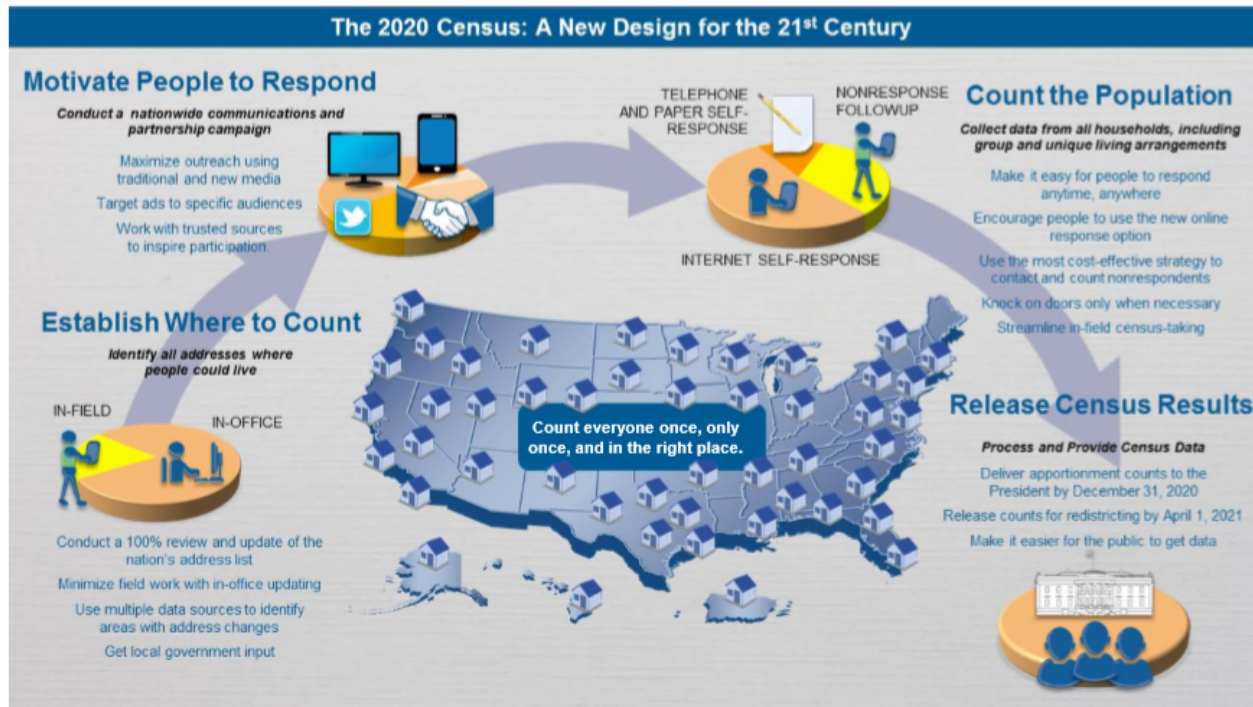
CASE STUDY: PORTFOLIO MANAGEMENT IN THE 2020 CENSUS PROGRAM

*Susan Hostetter and Sherri Norris, U.S. Census Bureau
2018 Project Management Symposium*

This paper is released to inform interested parties of ongoing operations and to encourage discussion of work in progress. Any views expressed on operational issues are those of the authors and not necessarily those of the U.S. Census Bureau.

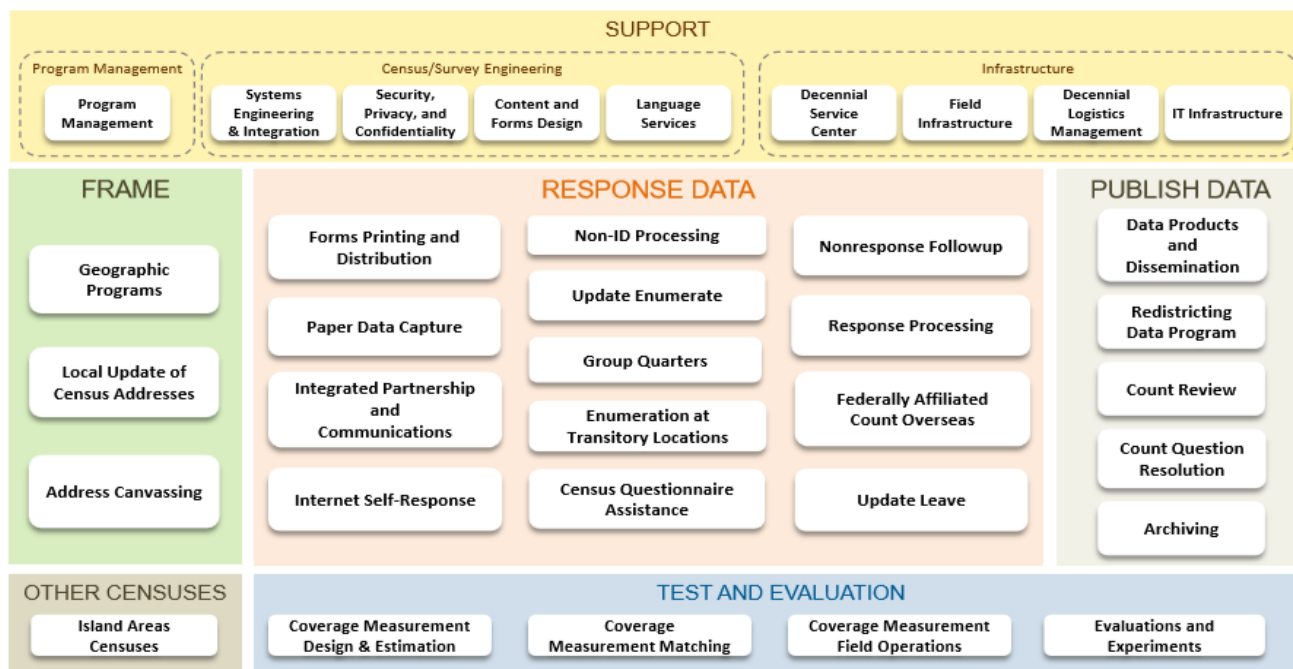
Design of the 2020 Census

The 2020 Census A New Design for the 21st Century

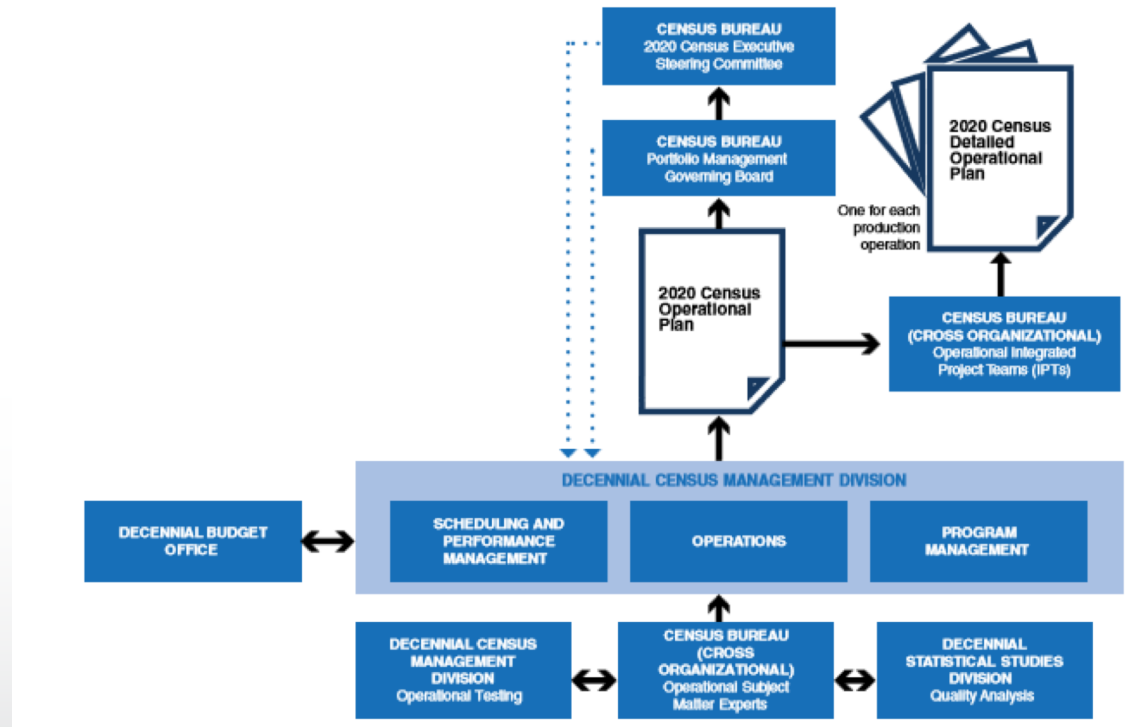


The 2020 Census Operations

The 2020 Census Operations



Organizations and Governance Boards for the 2020 Census Operational Plan

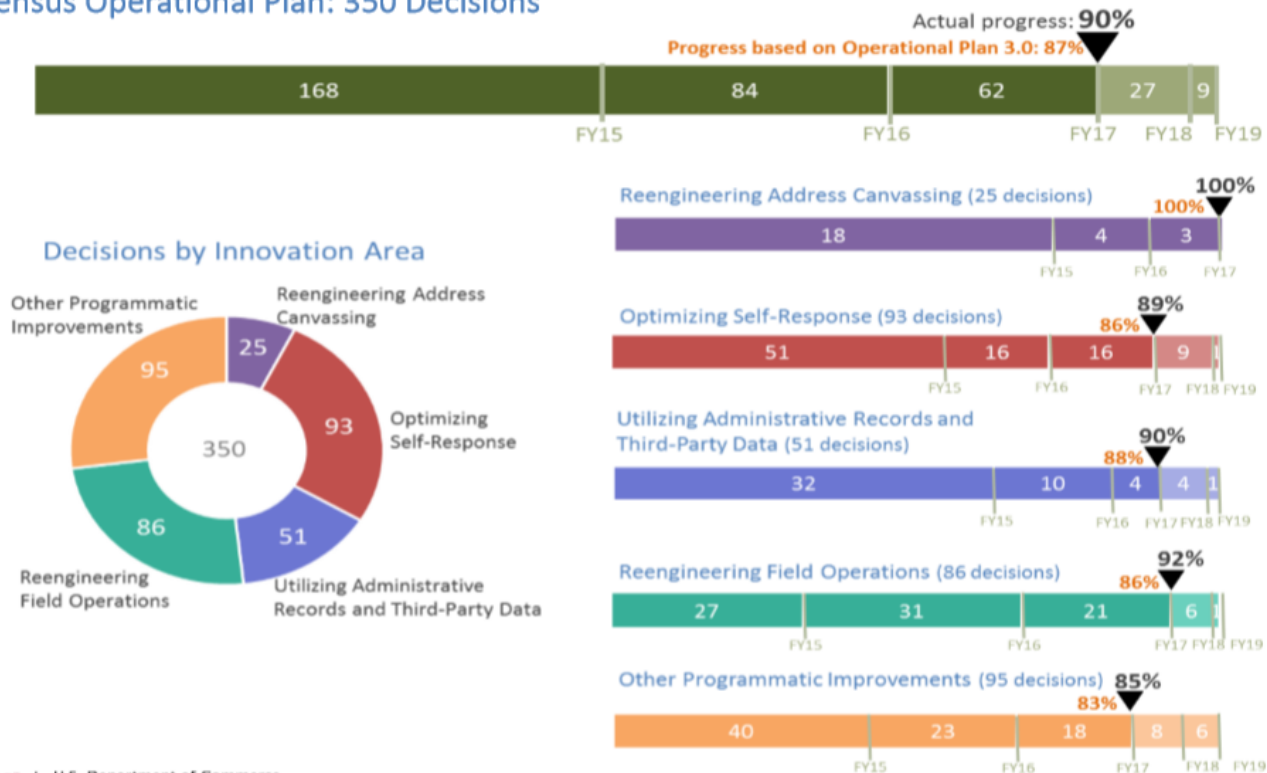


Source: U.S. Census Bureau (2017)

The 2020 Census: 2020 Census Operational Plan 350 Decisions

The 2020 Census

2020 Census Operational Plan: 350 Decisions



U.S. Department of Commerce
Economics and Statistics Administration
U.S. CENSUS BUREAU
[census.gov](https://www.census.gov)



(Source: Stempowski, 2017)

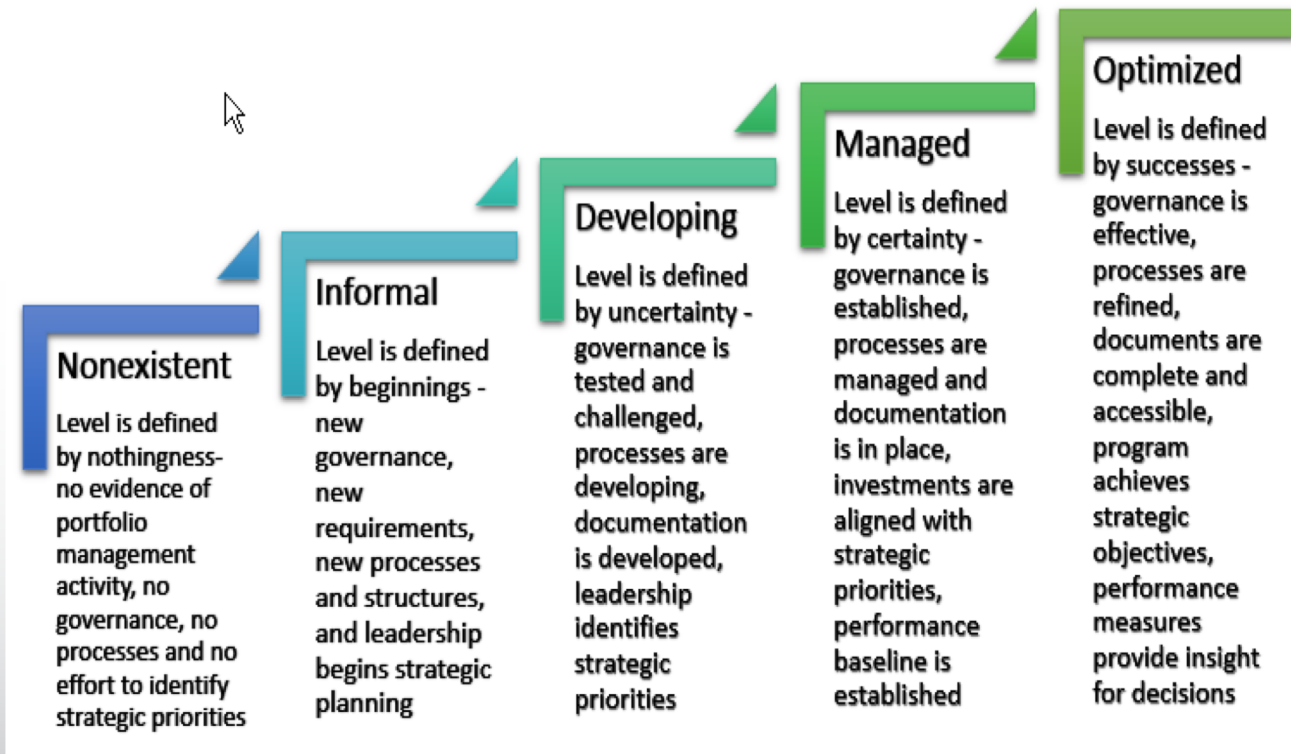
2020 Census Portfolio Management Questionnaire

- See handout for copy of questionnaire
- Respondents
- Ten process areas
- One change from case study: Add short descriptions of each process area
- Phone interviews versus online questionnaire
- Challenges or lessons learned

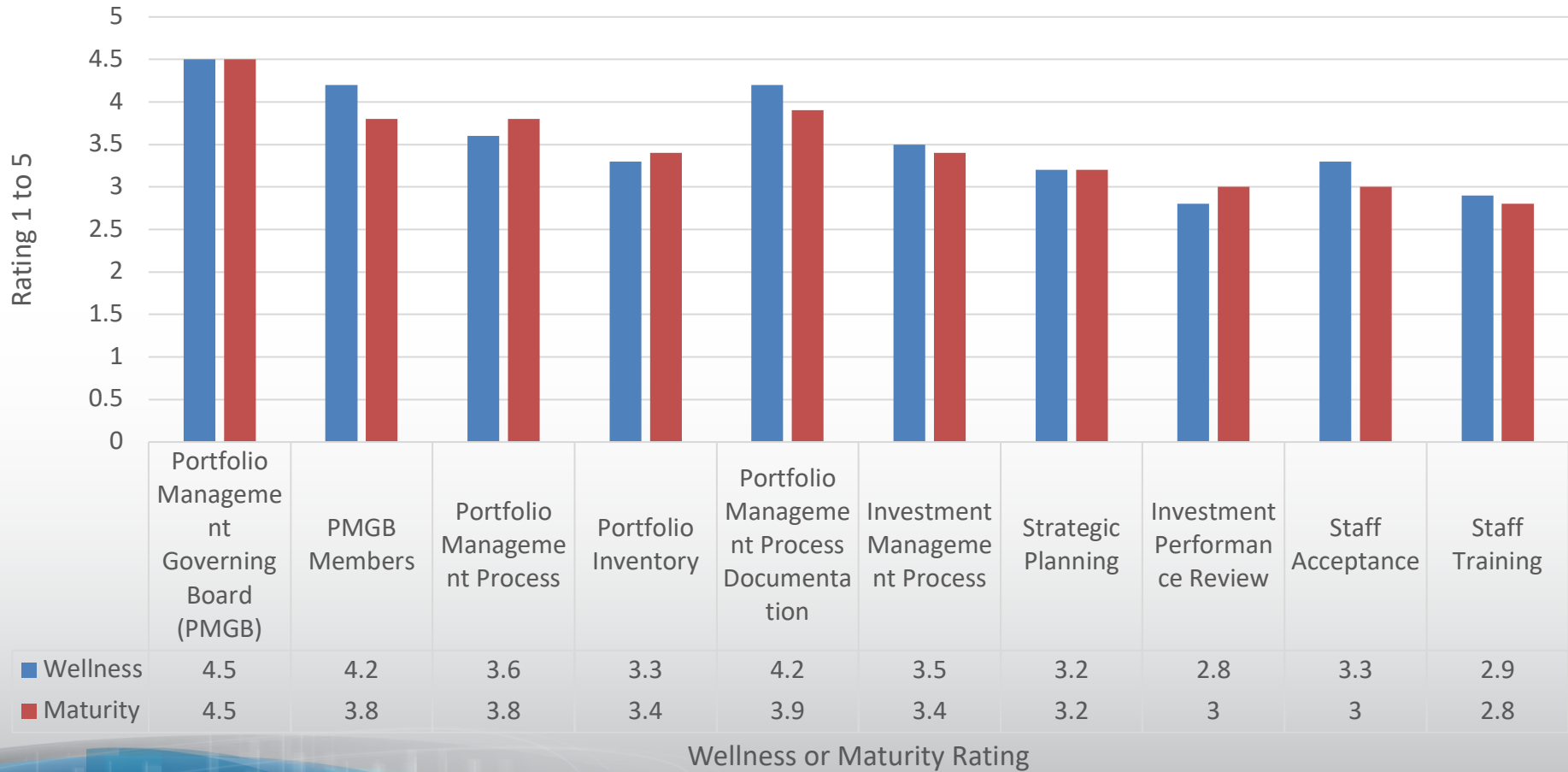
Wellness Rating Levels

1-Not well at all	2	3	4	5-Extremely well

Maturity Rating Levels



Portfolio Management Wellness and Maturity Ratings for 10 Processes



Respondent Feedback

- Overall, “a good process for the Decennial Directorate.”
- While respondents generally felt like this process is functioning well, it was noted that “2020 Census is relooking at this area to improve definitions, roles and responsibilities and clarity levels of decision making.”
- There were a range of comments regarding the portfolio inventory. One comments was that it is “well defined for the 2020 Census.” Another felt that “many investments never come to PMGB.”

Conclusions

- The current state of the 2020 Census portfolio management program has been documented.
- Governance structures are in place and working according to plan.
- Portfolio Management professionals rated 10 key process areas as functioning well and being managed.
- Rating are expected to change as the program ramps up for 2020 Census Program operations.

Author's Contact Information

Susan Hostetter

U.S. Census Bureau

Susan.Lynn.Hostetter@census.gov

Sherri Norris

U.S. Census Bureau

Sherri.J.Norris@census.gov