



PROJECT MANAGEMENT
CENTER FOR EXCELLENCE

A.J. CLARK SCHOOL OF ENGINEERING
Civil & Environmental Engineering Department



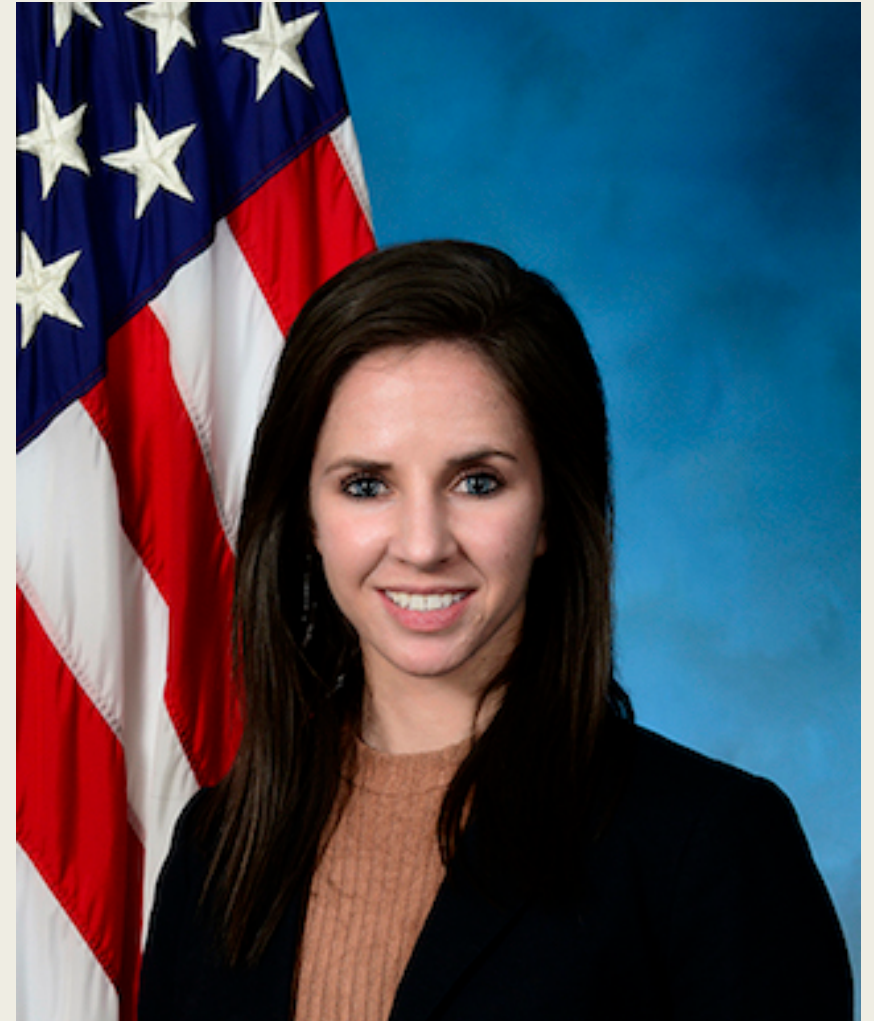
WELCOME TO THE OTHER SIDE - HOW WE ***CHANGED*** CHANGE

Chelsea Westover

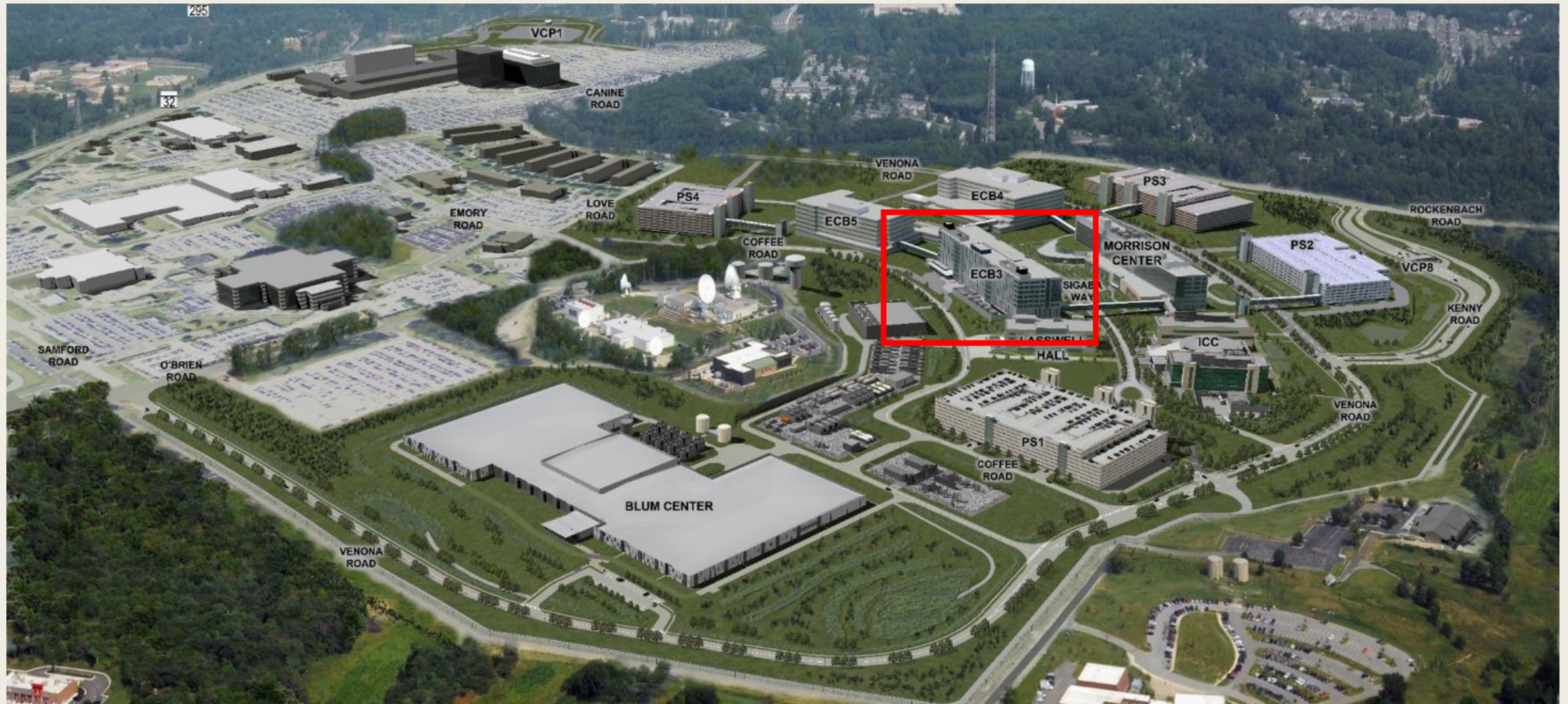
2020 Project Management Symposium

Chelsea Westover

- Simpson Gumpertz & Heger 2011-2013, 2014-2016
- Department of Defense
 - *Structural Engineer 2016 - 2018*
 - *Deputy Project Manager 2018 - Present*
- clwesto@radium.ncsc.mil



East Campus



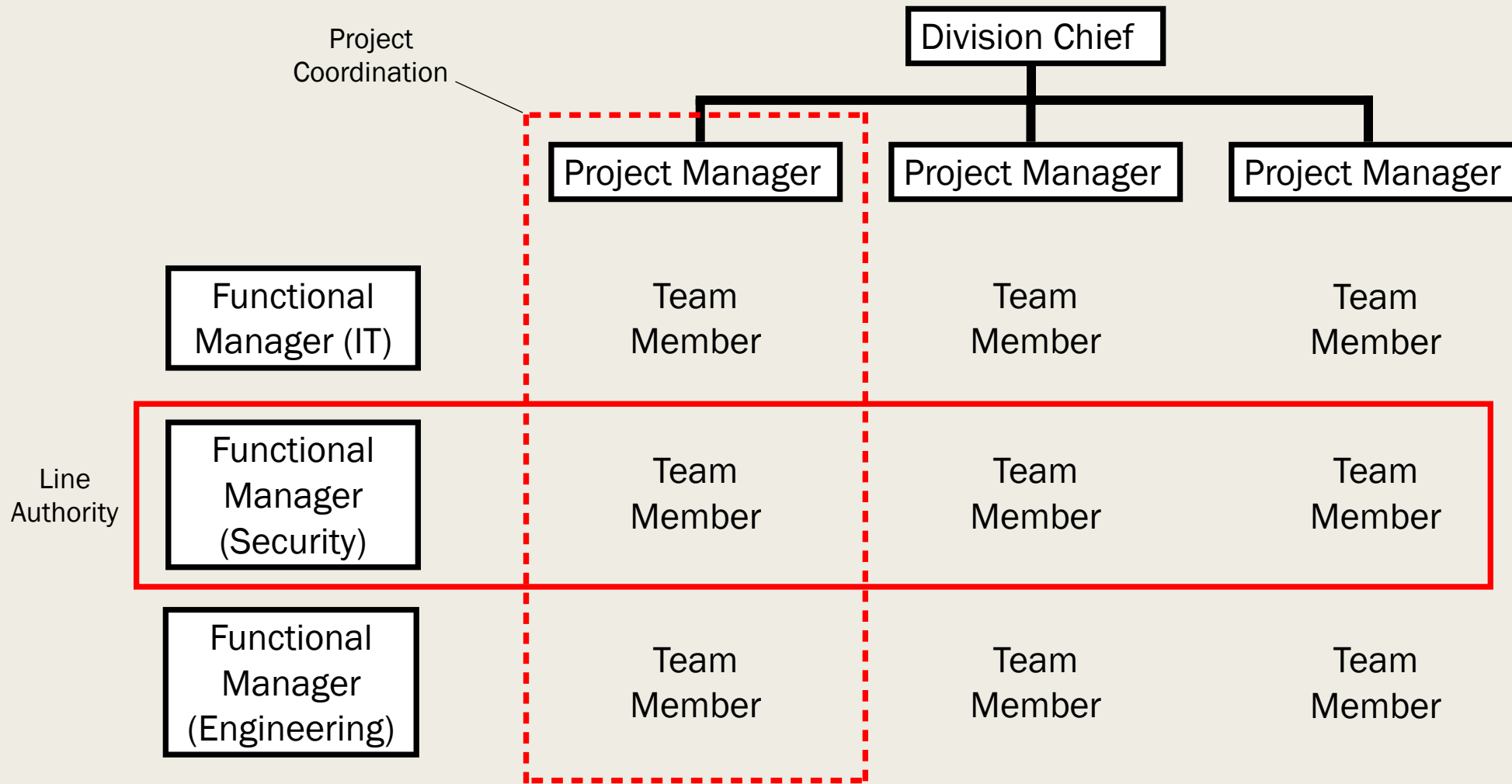
How We ***CHANGED*** Change



How We ***CHANGED*** Change

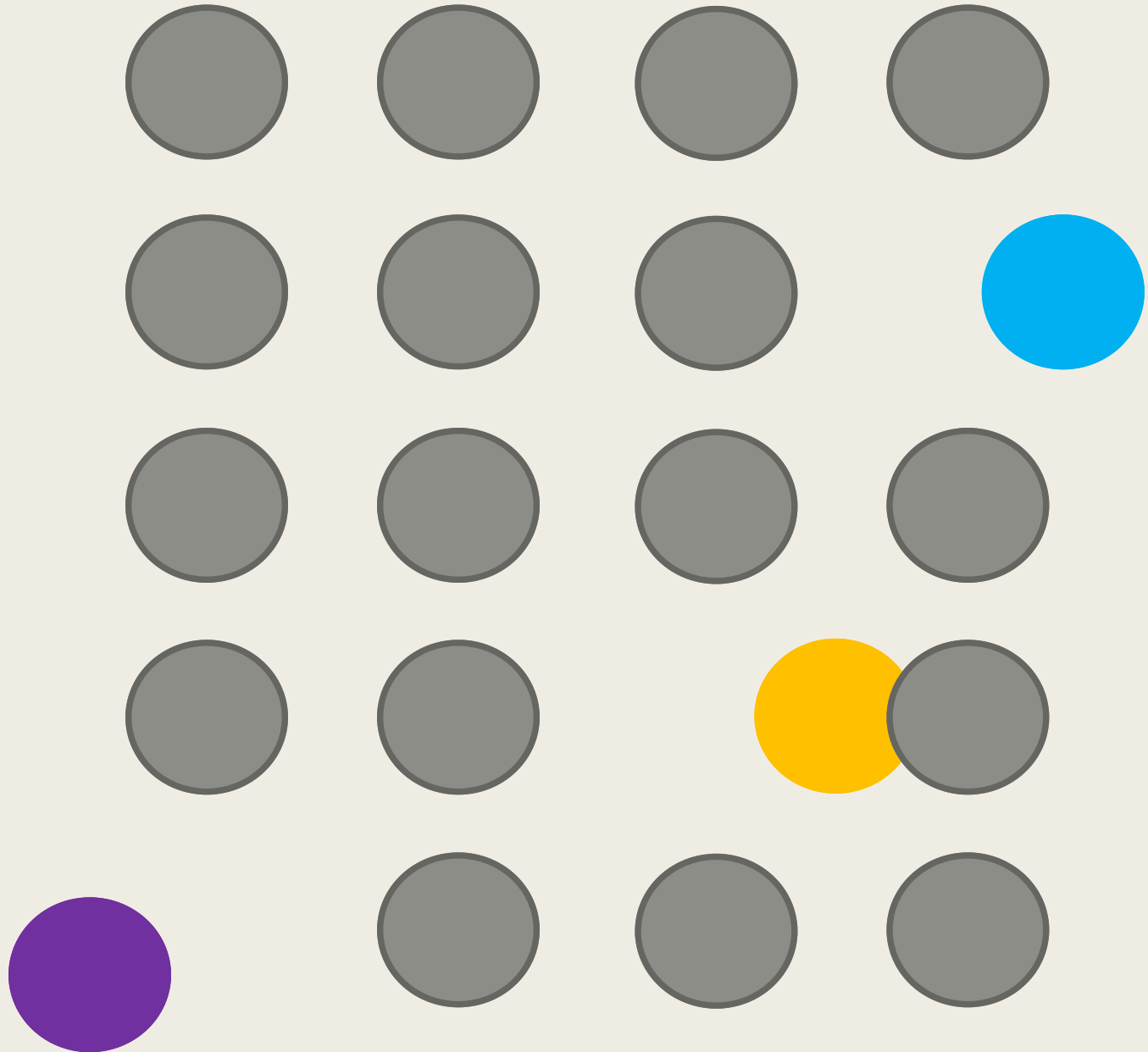


Organizational Structure and Matrix

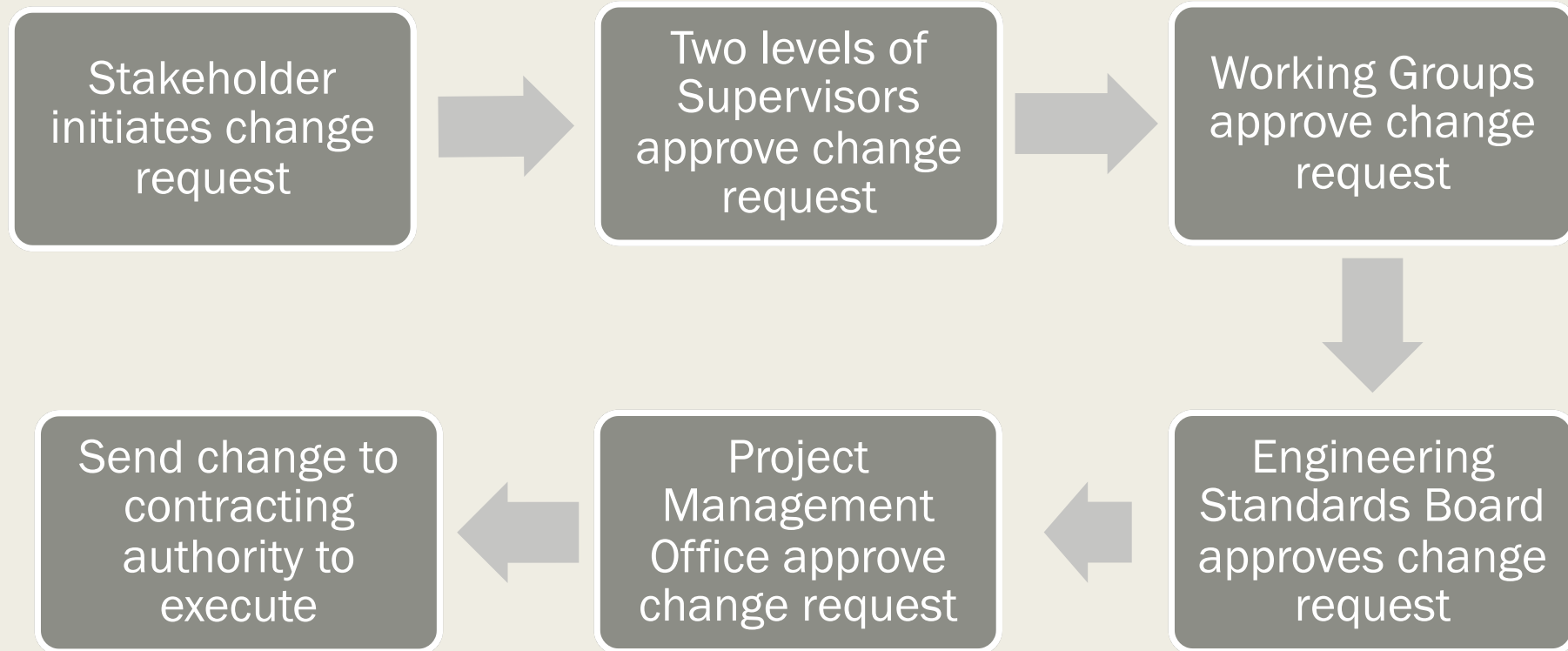


Change Management

- Requirements Development
 - *Facilities Criteria (FC)*
 - *Internal Policies*
- How do we vet proposed configuration changes?
- Requirements Change Request (RCR)
 - *Controls end-user project configurations*
 - *Control change to construction contracts*
 - *Tailored to matrix organization*



Requirements Change Request - Facilities Criteria Change



Why?

- Need multiple concurrences
- Better requirements management
- Consistency

*Bottom line: customer
configuration control
successfully controls
project change*

